

## QUICKSTART GUIDE



### SRS2i Stick Reader

This quickstart guide provides basic instructions for setting up and using your SRS2i Stick Reader.

## Contents

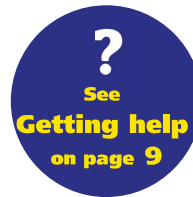
- Unpacking the box ..... 1
- Charging the battery ..... 2
- Getting around..... 2
- Recording EID tags..... 3
- Bluetooth® connection ..... 5
- Viewing sessions ..... 6
- Getting information off..... 7
- Datamars Livestock cloud software .... 8
- Getting help..... 9
- Modifying settings..... 11
- Maintenance and servicing ..... 13
- Compliance..... 14

For further information, visit [tru-test.com](http://tru-test.com)

The Datamars Livestock Knowledge Base provides searchable articles and videos to help you when you need it.

The Knowledge Base provides instant support for our apps, software and products.

Access the Knowledge Base via the mobile phone app or go to [support.livestock.datamars.com](http://support.livestock.datamars.com)



## Unpacking the box

Check that you have all of these items. If anything is missing, contact your supplier.



SRS2i stick reader (the stick reader)



USB cable

for charging. It also connects the stick reader to a PC.



Mains power adaptor

and power plugs for different countries.

## Charging the battery



Use only the power adaptor and cables supplied.

Do not charge the battery if the temperature is less than 5 °C (41 °F), or greater than 40 °C (104 °F).

1. Find the correct power plug for your country and assemble the mains power adaptor.



2. Plug in the power adaptor and switch on the power.

3. Connect the USB cable to the power adaptor and to the stick reader.

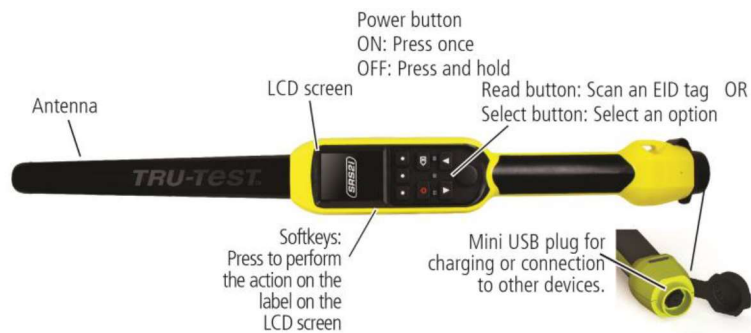


4. Leave the stick reader charging overnight before first use.

The stick reader can be used for up to 19 hours before it will need recharging again.



## Getting around

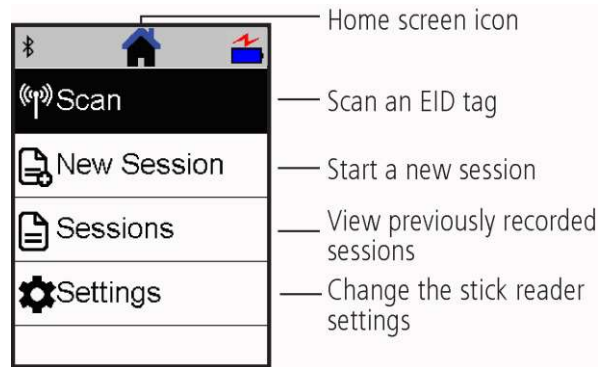
### Parts of the stick reader



## The Home screen

When you first switch on the stick reader, the Home screen is displayed:

Scroll through the options using the arrow keys  and  and choose an option using the Select button.



## Recording EID tags

### Ways of using the stick reader




The stick reader can be used in two ways:

1. Standalone - the stick reader saves each scanned tag in its internal memory. These records can be transferred afterwards, as described in section *Getting information off*.
2. Connected – the EID reader immediately transmits every scanned tag to a connected device, such as a weigh scale indicator.

## Recording EID tags (standalone)



You should start a new session file each time you begin a new scanning session.

1. Press  to switch on the stick reader.
2. On the Home screen, press  and select **New Session**.
3. Press .
4. Press the **Read** button while holding the stick reader near to an EID tag.



— The EID tag number is read and recorded.

An F or H will appear in the top left of the screen (depending on whether the tag type is FDX-B or HDX).

The stick reader beeps once (if the buzzer setting is enabled [default]).



When scanning EID tags, if animals are moving quickly through a race or into a pen, you can hold down the Read button continuously. Scanning will stop when the Read button is released.

### Displaying VIDs (visual IDs) during scanning

EID/VID pairs can be transferred from the PC to the stick reader prior to scanning using the Data Link PC software. This means that when an animal's EID tag is scanned, the corresponding VID number will be displayed automatically.

## Bluetooth® connection

The stick reader will automatically connect to any Tru-Test *Bluetooth* enabled weigh scale indicator, or any other device, with which it has previously been paired (when in BT Auto mode - default).

In order to manually establish a *Bluetooth* wireless connection (if you are using a non-Tru-Test weigh scale indicator, or you are having trouble establishing a *Bluetooth* wireless connection):




1. With both devices off, position the stick reader close to the other device.
2. Switch on the device and, if necessary, check that its *Bluetooth* setting is enabled.
3. Switch on the stick reader.
4. Select **Settings**, then **Bluetooth** to display the Bluetooth Settings screen.
5. Select **Search for devices**.  
A list of available devices will be displayed.
6. Select a device.  
Wait for up to one minute until the two devices are paired. When pairing is complete, the *Bluetooth* indicator light above the Read/Select button will illuminate blue.
7. Use the stick reader to scan an EID tag in order to test the connection.



Always turn on the device you are trying to pair with first, BEFORE the stick reader.

## Viewing sessions

You can view information collected during a session in the Sessions screen.

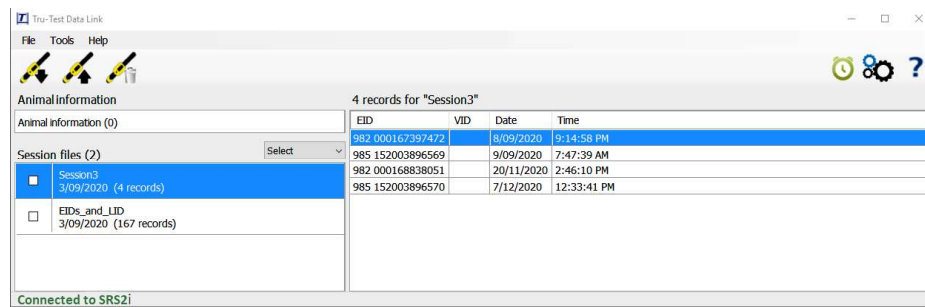
1. If necessary, press  to go to the Home screen.
2. Select **Sessions**.  
A list of sessions is displayed.
3. Select a session to view:

Session start time/date	Count of the number of records in the session
28/09/2021 10:23	9
EID 999 000000000005 VID	— Select an individual record to view animal details, if required
EID 999 000000000007 VID	— Individual EID tags
EID 999 000000007179 VID	
EID 999 000000000006 VID	
EID 999 000000008514 VID	
More ▾	— Options for editing the session

# Getting information off

There are two ways to get information off the stick reader.


## Data Link PC software



You can:

- save session files.
- upload sessions to Datamars Livestock.

To do this:

1. Connect the stick reader to a PC using the cable supplied.
2. Launch Data Link on your PC.
3. Click  to get information off the stick reader.



Data Link PC software can be downloaded from the Tru-Test website [tru-test.com](http://tru-test.com).

## Data Link app for mobile devices



You can:

- email a session file.
- register a transaction with NAIT (NZ) or NLIS (Australia).
- upload sessions to Datamars Livestock.

To do this:

Launch the app on your smartphone and follow the instructions.

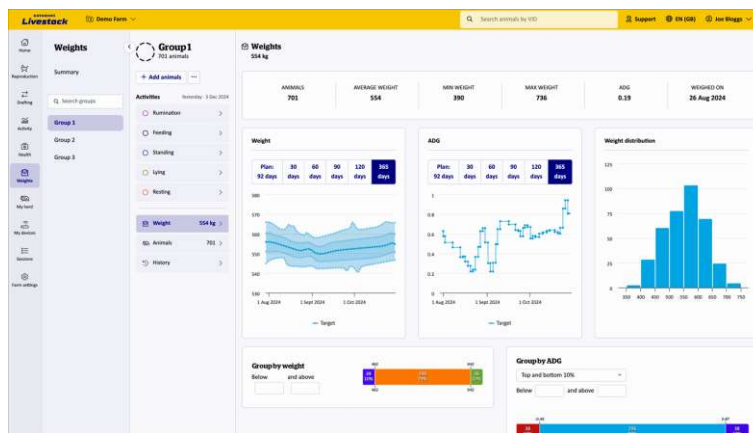


The Tru-Test Data Link mobile app is available to download for free from the Google Play\* store (Android\* devices) or the Apple App store\* (Apple iOS\*).

# Datamars Livestock cloud software

View your data online, anywhere, with Datamars Livestock. Datamars Livestock allows you to monitor animal weight gains and track performance to target weights.

Monitor animals in groups, and act early if they fall behind target; or track individually to identify top performers and slow growing stock.



[monitoring.livestock.datamars.com](https://monitoring.livestock.datamars.com)

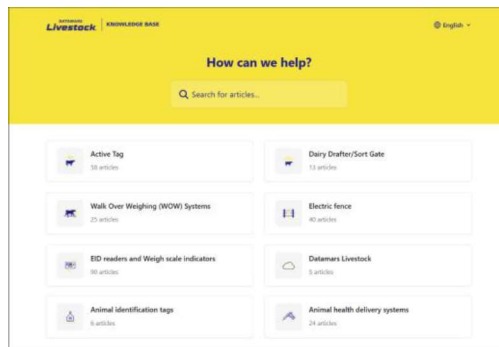
## Getting help

### Knowledge Base articles and videos

The Datamars Livestock Knowledge Base provides searchable articles and videos to help you when you need it.

The Knowledge Base provides instant support for our apps, software and products.

Access the Knowledge Base via the mobile phone app or go to [support.livestock.datamars.com](https://support.livestock.datamars.com)



### Online training

The Datamars Livestock Training Academy provides easy, accessible online training modules.

You can work at your own pace to learn about our products and solutions.

Register for free at [academy.livestock.datamars.com](https://academy.livestock.datamars.com)



## Instructional setup guides

Setup Guides help you make the most of your Tru-Test device. They are available on the Tru-Test website [tru-test.com](http://tru-test.com). They provide instructions and practical examples to help you:

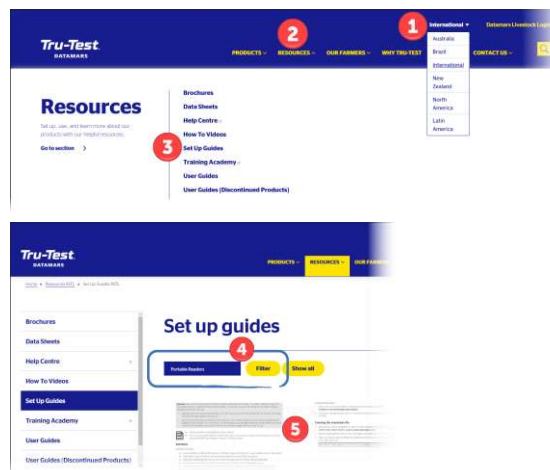
- set up and use advanced features
- use your device with other third-party software or hardware.

Examples of some titles:




- *Setup Guide - XRS2i XRS2 SRS2i SRS2 Stick Reader - Uploading a custom translation file*
- *Setup Guide - XRS2i XRS2 SRS2i SRS2 Stick Reader - Transferring Z Tags matched EID VID tags to a stick reader*
- *Setup Guide - XRS2i XRS2 SRS2i SRS2 - Transferring Z Tags matched EID VID tags to a stick reader*

To access these guides:

1. Go to [tru-test.com](http://tru-test.com) and select your region.
2. Click **RESOURCES**
3. Click **Set Up Guides**
4. Select a product and click **Filter**.
5. Setup guides for the selected product are listed below.



## Online troubleshooting

For personalised troubleshooting and advice, chat with us directly. In the mobile phone app, tap on , then . On any of our websites, in the Datamars Livestock Knowledge Base, or in the Datamars Livestock Training Academy, click on  in the bottom right-hand corner of the screen.

## Modifying settings

When shipped, the stick reader is set up to simply scan EID tags. You can change the way that the stick reader is set up to suit the task that you are about to perform.

### Settings menu

To modify the settings, from the Home screen, select **Settings**.



After you have changed any settings, you can save these as your own custom favourite. You can then apply this favourite next time that you want to do the same task.

---

#### General

Change the Date/Time, Language/Country, Auto Off, Vibration and Buzzer settings. View the stick reader Firmware details.

---

#### Bluetooth

---

##### *Bluetooth*

Auto\*\* – Automatically connect to the *Bluetooth*® enabled device most recently used or to a Tru-Test *Bluetooth* enabled weigh scale indicator.

Off – Turn off *Bluetooth* wireless connectivity.

Manual – Manually search for a *Bluetooth* enabled device and accept incoming *Bluetooth* connections.

---

*Search for Devices* – Manually search for a *Bluetooth* enabled device within range (see row above).

---

*Paired Devices* – Display previously connected (paired) devices.

---

##### *Advanced*

---

##### *Connect Mode*

Default\*\* – set this mode to connect to weigh scale indicators and most software systems.

HID (Human Interface Device) – set this mode if you want the scanned EID tag to be automatically transmitted to a spreadsheet (e.g. Excel), or another device that has not directly integrated with the stick reader.

---

*Output*

---

Default\*\* – Leave this set to Default unless you have been instructed to change it by a Datamars representative.

---

**Tag Reading**

---

*Read Mode*

---

Standard\*\* – Press the Read button to scan a tag. Hold down the Read button to continuously scan tags.

Continuous – Press the Read button to continuously scan tags. Scanning will only stop when the Read button is pressed again.

Single – Press the Read button to scan a single tag. Even if you hold down the Read button, another tag will not be scanned.

---

*Tag Format* - Format and example shown:

---

Decimal**	964 155000012939
Decimal2	964155000012939
Hex	8000F66416B8808B
ISO	1000000964155000012939
ISO23	A0000000964000000123456 (animal) or R0000000964000000123456 (non-animal)

---

*Allow Duplicates*

---

No\*\* – Set to ensure that an EID is not recorded multiple times in the same session.

Yes – Set to allow EIDs to be recorded multiple times in the same session.

---

*ISO Synchro*

---

On – Set this mode to enable wireless synchronisation with panel readers.

Off\*\* – Turn off wireless synchronisation with panel readers.

---

Default settings marked \*\*

# Maintenance and servicing

## Backing up your information

We strongly recommend that you regularly back up the data on your stick reader by transferring it to a PC using Data Link PC software.

## Updating your software

We recommend that you regularly update the stick reader software so that you keep up with the latest features and improvements.

To update the software:

1. Connect the stick reader to a PC using the cable supplied.
2. Launch Data Link on your PC.
3. Click **Tools / Updates**.
4. Follow the step-by-step instructions.

For more information, see the Data Link help.



When updating software, the data on your stick reader will remain intact. However, we strongly recommend that you transfer the information on your stick reader onto a PC *before* updating.

## Caring for the stick reader

Wipe the stick reader clean using a damp cloth, warm water and soap. Other cleaners may damage the case or screen.

Do not immerse the stick reader in water.

Do not leave the stick reader where it may be exposed to extreme temperatures (e.g. on the dashboard of a vehicle).

Store the stick reader in a cool, dry place.

Fit the dust cap when there are no cables connected to the stick reader. This will prevent moisture and dirt from entering the socket.

EN

## Europe - Instructions for disposal of product



This symbol on the product or its packaging indicates that this product (and its batteries) must not be disposed of with other waste. Instead, it is your responsibility to dispose of your waste equipment by handing it over to a designated collection point for the recycling of waste electrical and electronic equipment. The separate collection and recycling of your waste equipment at the time of disposal will help conserve natural resources and ensure that it is recycled in a manner that protects human health and the environment. For more information about where you can drop off your waste equipment for recycling, please contact your local city recycling office or the dealer from whom you purchased the product.

This product incorporates both a lithium-ion (LiNiMnCoO<sub>2</sub>) rechargeable battery and a lithium metal (CR1220 35 mAh) button/coin cell battery.

For instructions on how to dismantle this product for recycling, email [service.dept@datamars.com](mailto:service.dept@datamars.com)

## Compliance

### FCC notice

This device complies with part 15 of the FCC Rules. Operation is subject to the following two conditions: (1) This device may not cause harmful interference, and (2) this device must accept any interference received, including interference that may cause undesired operation.

This equipment has been tested and found to comply with the limits for a Class B digital device, pursuant to part 15 of the FCC Rules. These limits are designed to provide reasonable protection against harmful interference in a residential installation.

This equipment generates, uses and can radiate radio frequency energy and, if not installed and used in accordance with the instructions, may cause harmful interference to radio communications. However, there is no guarantee that interference will not occur in a particular installation. If this equipment does cause harmful interference to radio or television reception, which can be determined by turning the equipment off and on, the user is encouraged to try to correct the interference by one or more of the following measures:

- Reorient or relocate the receiving EID antenna.
- Increase the separation between the equipment and receiver.
- Connect the equipment into an outlet on a circuit different from that to which the receiver is connected.
- Consult the dealer or an experienced radio/ TV technician for help.
- Any changes or modifications not expressly approved by Datamars could void the user's authority to operate the equipment

### FCC warning



Users are cautioned that changes or modifications not expressly approved by the party responsible for compliance could void the user's authority to operate the equipment.

## Responsible party in the USA

This product is supplied by:

Datamars Inc  
528 Grant Road  
Mineral Wells  
Texas 76067  
UNITED STATES  
Toll free: 800 874 8494

## ISED Canada notice

This radio transmitter, model SRS2i-1, has been approved by Innovation, Science and Economic Development Canada to operate only with its integral antenna.

This device complies with Innovation, Science and Economic Development Canada licence-exempt RSS standard(s). Operation is subject to the following two conditions:

- (1) this device may not cause interference, and
- (2) this device must accept any interference, including interference that may cause undesired operation of the device.

## EU declaration of conformity



Hereby, Datamars declares that the radio equipment type SRS2i-1 is in compliance with Directive 2014/53/EU. The full text of the EU declaration of conformity is available at the following internet address:  
<https://intl.tru-test.com/compliance>

EU Importer:

Datamars Slovakia s.r.o.  
Dolné Hony 6, 949 01  
Nitra, Slovak Republic

This radio equipment emits a maximum of 0.7 mW e.i.r.p. in the frequency band 134.18 to 134.22 kHz and a maximum of 6 mW e.i.r.p. in the frequency band 2.40 to 2.48 GHz.

The *Bluetooth*<sup>®</sup> word mark and logos are registered trademarks owned by Bluetooth SIG, Inc. and any use of such marks by Datamars SA and its subsidiaries is under license. Other trademarks and trade names are those of their respective holders.

All trademarks with an \* are neither owned by nor licensed to Datamars SA and belong to their respective owners.